



# COLORADO

Department of  
Transportation

Division of Highway Maintenance  
DHM Director: Kyle Lester  
John Lorme (Superintendent, Section 5)





# Division of Highway Maintenance

## Maintenance Responsibilities

**CDOT**  
MAINTAINS & OPERATES  
**23,000**  
**TOTAL**  
LANE MILES  
OF HIGHWAY



**3,454**  
**BRIDGES**



**8 Major Tunnels**



**35** **MOUNTAIN**  
**PASSES**  
OPEN YEAR-ROUND



**6.1** MILLION  
MILES  
PLOWED   
OF SNOW PER YEAR

**4500 Vehicles**  
**850+ Plows**

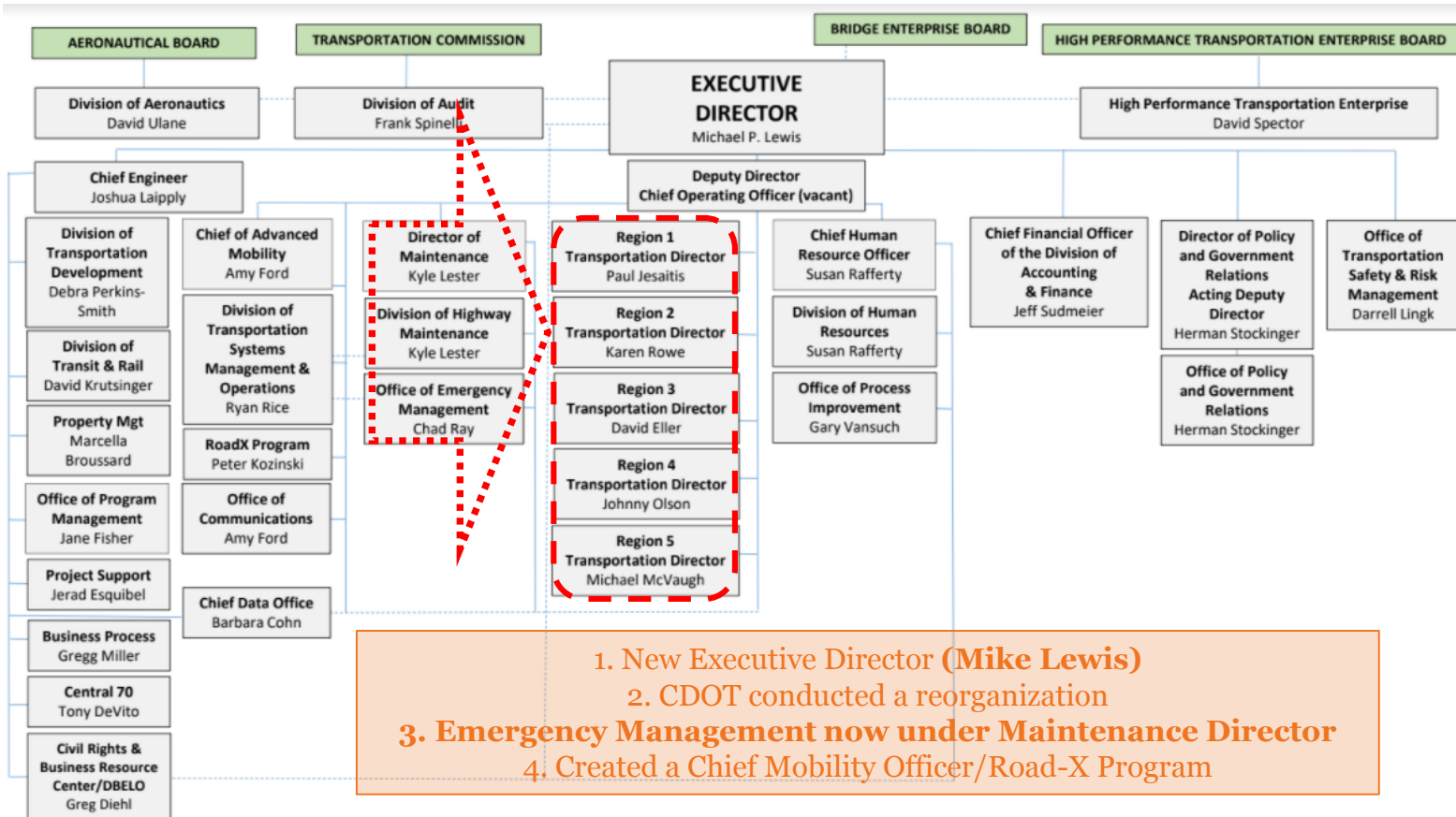


\*CDOT Maintenance triggers more than 700 avalanches yearly w/explosives (250+ impacted Colorado's highways)





# CDOT Organizational Structure



1. New Executive Director (**Mike Lewis**)
2. CDOT conducted a reorganization
3. **Emergency Management now under Maintenance Director**
4. Created a Chief Mobility Officer/Road-X Program

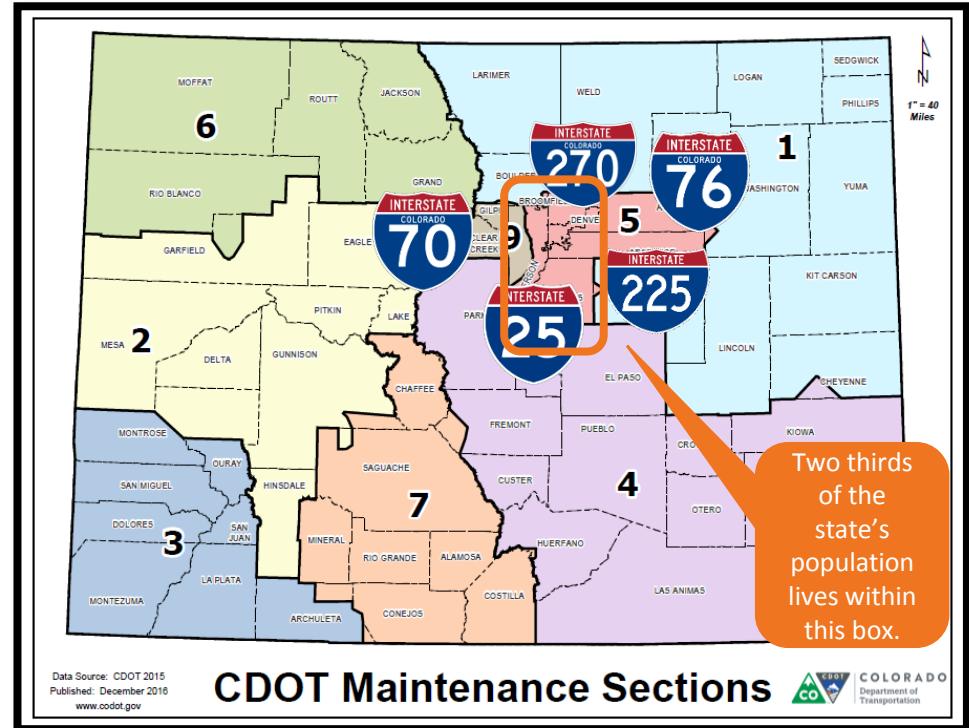
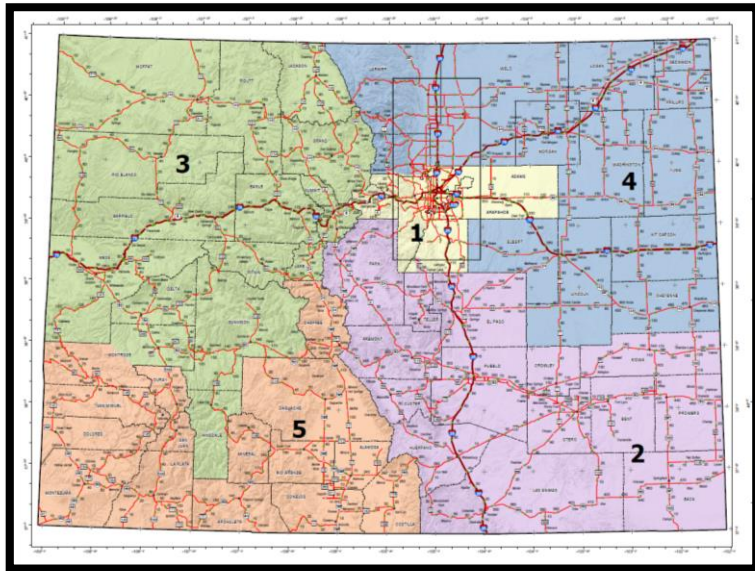




# Division of Highway Maintenance

## Engineering Regions (5) and Maintenance Sections (8)

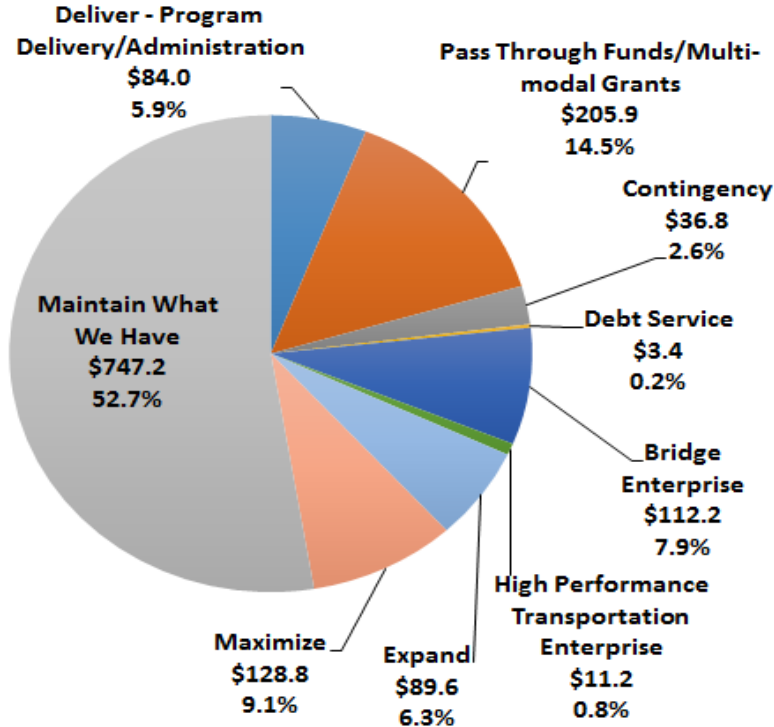
**3200 CDOT Employees**  
**1400 Maintenance Staff**  
**Approx. 1000 Frontline Operators**





# Division of Highway Maintenance

## Maintain What We Have



**CDOT FY17 Budget \$1.42B**

**Maintenance Budget \$747M**

**MLOS Budget \$268**

**Equipment Replacement \$26M**

**Tunnels \$8.4M**

**Facilities \$20M**

**Snow and Ice \$78M**





# Division of Highway Maintenance

## CDOT Maintenance Challenges...

- ❖ State's population is increasing rapidly (1.3M in the last 10 years)
- ❖ Maintenance Budget (decreasing), while cost of doing business (increasing)
- ❖ SAMSAM Cyber incident (300+ servers and 3500 computers) Days 30+
- ❖ Labor market does not support highway maintenance - retention (counties/private companies)
- ❖ Drought Conditions (intense wild fires), maintenance forces undergoing red card training
- ❖ Maintenance Sections are very diverse

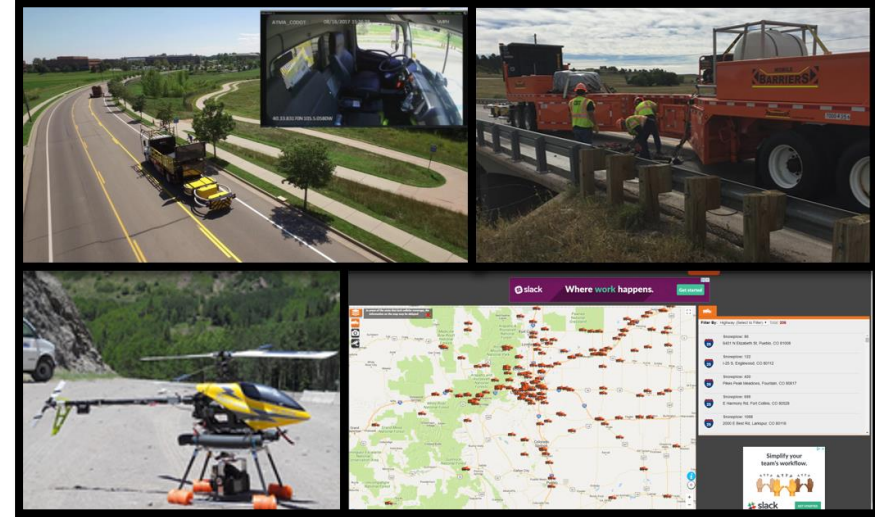




# Division of Highway Maintenance

## Future of CDOT Maintenance

- ❖ Autonomous Impact Protection Vehicles
- ❖ 100% of our fleet is AVL Equipped
- ❖ Vehicle Standardization
- ❖ Digital/Mobile Work Order (GIS)
- ❖ Route Optimization
- ❖ Managed Lane Management
- ❖ Cutting Edge Equipment (UAVs/MBTs)



## Workforce Professionalization

- ❖ Standardized Training (Formal Academy)
- ❖ College Degree Program (HWY Maintenance)
- ❖ Maintenance Leadership Programs
- ❖ CDOT CDL Training and Testing Program (trainee)
- ❖ CDOT Accidents (vehicles/personal injury down 36%)
- ❖ TIMs Track and Training Complex

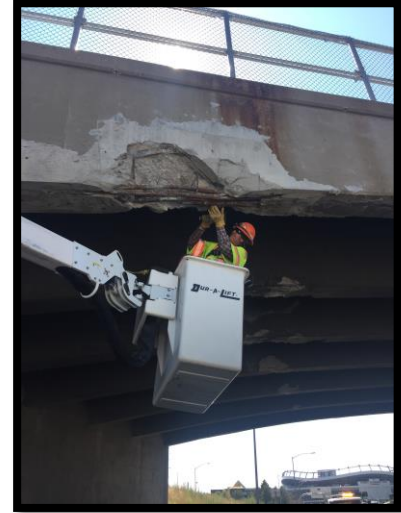




# WHY ISN'T IT EASY BEING ORANGE?

Why are we here...?

- ❖ CDOT hopes “No Boundaries” can prevent us from reinventing the wheel
- ❖ Share lessons learned; When a peer group is working on a challenge, having diverse perspectives can pay huge dividends
- ❖ To focus the collective awareness of many different agencies on one specific issue. We hope the result is an intensity of thought, capable of delivering much greater mental energy.







# Division of Highway Maintenance



The Colorado Department of Transportation exists to save lives and make lives better!





# Division of Highway Maintenance

Questions?

