



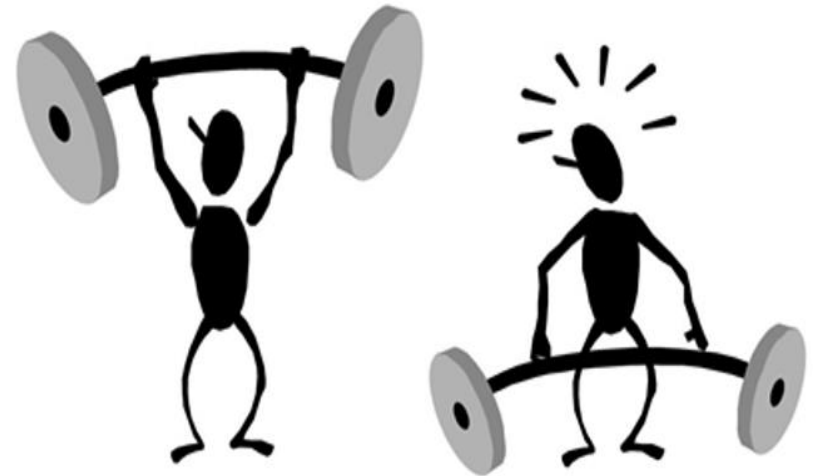
MaineDOT

***Maintenance Programs
Strengths, Challenges and Success***

Randy Geaumont, Superintendent of Highway Operations

Topics

- Overview of Maine
- Maintenance Programs
 - Budget
 - Strengths
 - Challenges
 - Success
- Questions



State of Maine Statistics

Population: **1.3 million**

Land Area: **33,000 square miles**

Forest: **17 million acres**

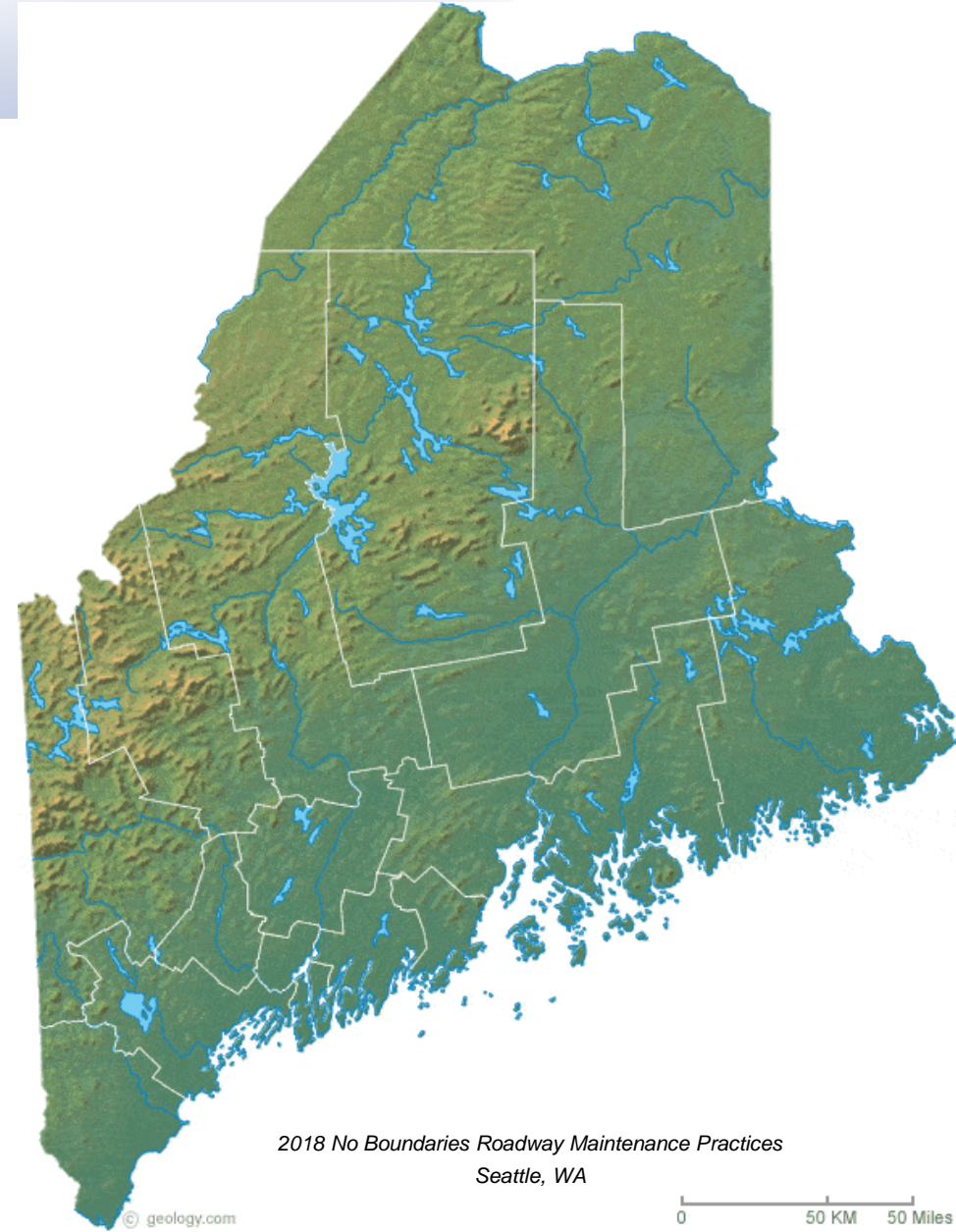
Road Mileage: **22,000+ miles**

Largest City: **Portland**

(Pop. 64,000)

Summer Budget: **\$104 million**

(\$2 million supplemental)



Maine Maintenance Programs

- PMRAP Program (Plant Mixed Recycled Asphalt Pavement)
- LCP (Light Capital Paving)
- Large Culverts (5' or greater and less than 10')
- Bridge Work
- Ditching & Culvert work

Superintendent of Highway Operations

- ***Statewide Liaison***
 - Work with region Superintendents
 - Oversee statewide operations and scheduling of the Pug Mill Crew
 - Identify, define and implement level of service standards
 - Manage Bureau's capital equipment purchases
 - Work with the regions and HQ to develop recommended statewide work plan initiatives
 - Lead statewide Operations Managers in their functional roles to assure statewide consistency
 - Develop and implement training programs for various highway maintenance activities
 - Statewide Debris Management liaison for MEMA

MATS System Administrator

- ***Managed Assets for Transportation Systems***
 - Tri-State Application (ME, NH and VT)
 - Conduct statewide monthly meetings with region Data Managers to ensure reporting consistency and accuracy
 - Oversee system-wide asset management and inventory support.
 - Supervise the performance and work initiatives of the region Data/Asset Managers
 - Oversee the Bureau's crew payroll reporting efforts to ensure compliance with the Department's bi-weekly processing standards

Challenges

- **Staffing**
 - Reduction of FTE's over last 10 years
 - Less people to do the work
 - Candidate pool shrinking
 - Weak wages
 - Generational factor
 - Hiring non-CDL operators
 - Takes time, money and resources
 - Lose trained personnel to municipalities, contractors etc. for better pay

Challenges cont.

- ***Short Season***
 - April to September
 - Work Plan to Follow
 - Summer storms take time and resources
 - Flooding
 - Wind damage
 - Etc.

Strengths

- **Work well with other Bureau's in the Department**
 - Combine forces to get the biggest “bang for our buck”
 - Contract work that makes sense
 - Bridge work
 - Large ditching projects
 - Trucking of Light Capital Paving etc.
 - Contract labor
 - Allows us to better utilize our forces and equipment for our work plan

Program Success

- ***Pug Mill Program (PMRAP)***
 - Combined effort with Project Development and Maintenance & Operations
 - Primarily Major and Minor collectors < 4000 AADT
 - Approx. 925 miles in this category
 - Typical recon/rehab @ \$1,000,000 per mile
 - Cost would approach \$1,000,000,000 Billion
 - 25 to 30 miles yearly (approx. \$300K per mile)
 - 2500 to 3000 tons of recycled asphalt per mile
 - Upon project completion a determination will be made if road segment will be placed in Pavement Preservation Program



Questions?