



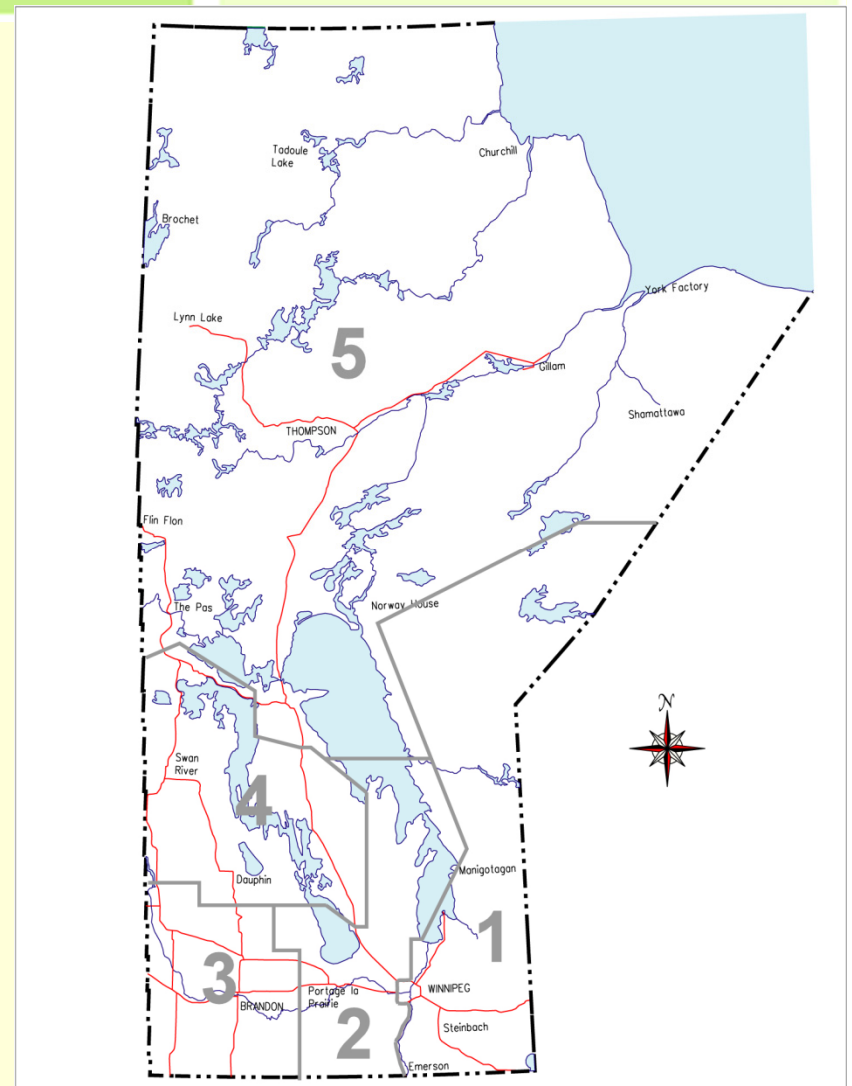
# Maintenance Operations

From  
Manitoba Canada!



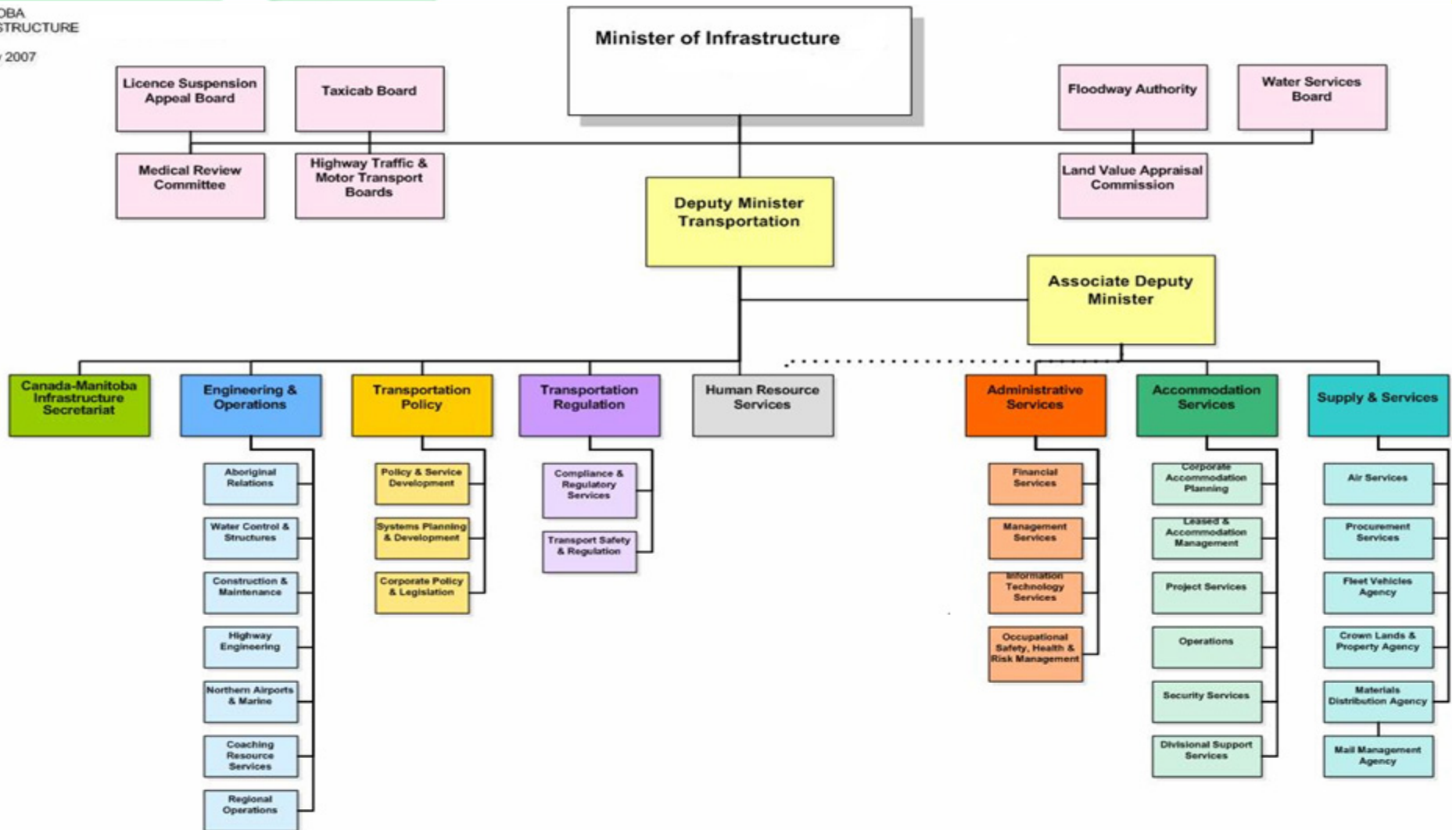
# The Department

- Region 1 – Steinbach
- Region 2 – Portage
- Region 3 – Brandon
- Region 4 – Dauphin
- Region 5 – Thompson
- 19,500 KMs of Road
- 2,400 Bridges & Structures
- 2,200 KMs Winter Roads
- 2,300 Pieces Equipment
- 560 Office / Shop Structures



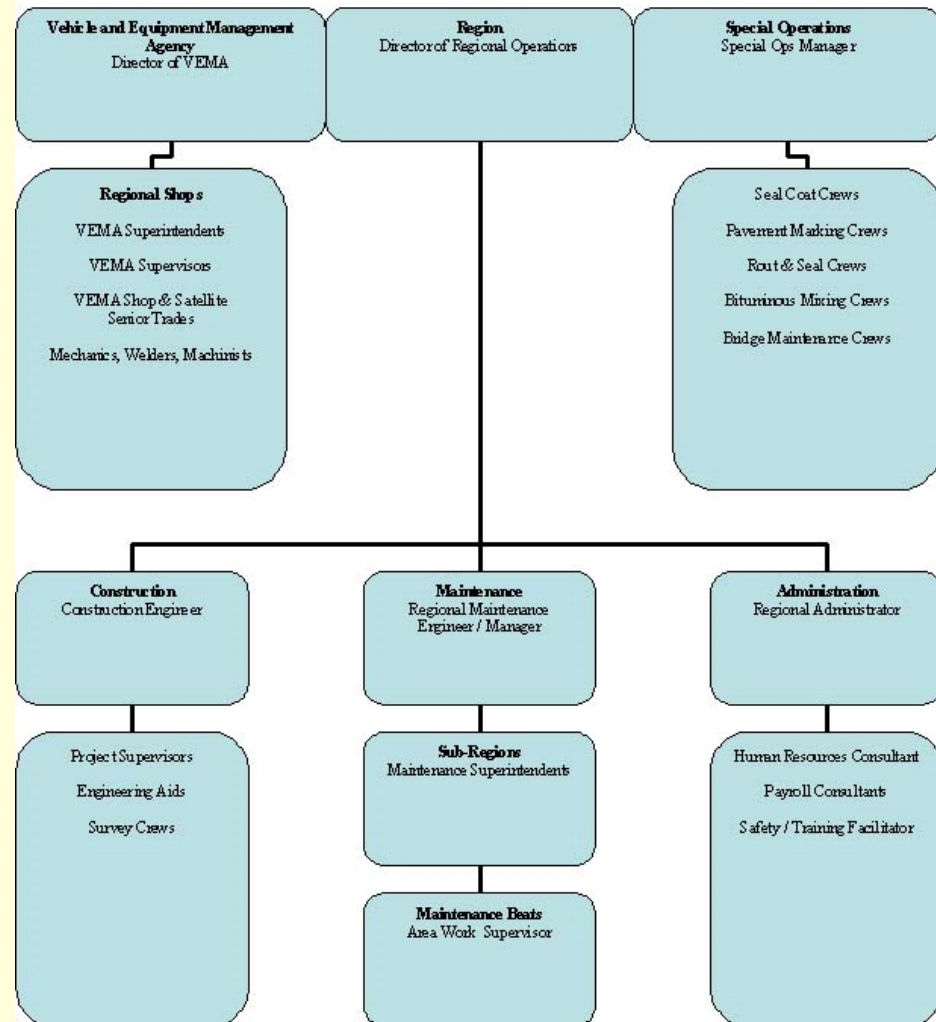
# The Department

MANITOBA  
INFRASTRUCTURE  
January 2007



# The Department

- Regional Structure:
  - Director or DRO
  - ME/M
  - Sub Regions
    - Superintendents
  - Maintenance Beats
    - Supervisor (ARS)
    - Assistant (AWS)
  - Commonly called Resource Groups





# Our Operations

- Predominately delivered by in-house staff
- One of three Provinces that are not private
- Cities, Towns and Rural Municipalities (RMs or Counties), take care of their own
- Often partner with RMs for Gravel Roads
- Internal specialty crews deliver sealcoat, route and crack seal, bridge maintenance and asphalt mixing operations



# Our Operations

- Our Work Programs include:
  - Surface Maintenance
  - Shoulder Maintenance
  - Roadside Maintenance
  - Drainage Maintenance
  - Sign Maintenance
  - Winter Maintenance
  - Overheads



# Program Strengths


- Designed, built and implemented a computer based Maintenance Management System (1999)
- Designed, built and implemented a Maintenance Career Training Program (2006)
- Testing CRAFCO's Mastic One product (2017)
- Documenting Business Processes (2017)





# Program Weaknesses

- Maintenance is the 'Poor Cousin' in our Department
- Very difficult to dedicate funding to research when the needs on the road are so great
- Shortage of Engineers in Department so little emphasis for us in Maintenance
- Very limited Partnership opportunities



Al Moody

[Alan.Moody@gov.mb.ca](mailto:Alan.Moody@gov.mb.ca)

204 792 8856

PO Box 606

Boissevain MB

Canada R0K 0E0