

# LA DOTD Maintenance Management System

No Boundaries Roadway  
Maintenance

October 16-18, 2018



# Management Systems

- Original MMS went live in November 2010
- SAP Plant Maintenance
  - Captures work orders for fleet and facilities
  - Tracks movable property assets
- Agile Assets
  - Linear assets
  - Captures work orders for road and structure assets

# SAP Plant Maintenance

- Data captured in Plant Maintenance (PM)
  - Materials
  - Equipment

The labor has to be entered separately and manually into SAP financial.

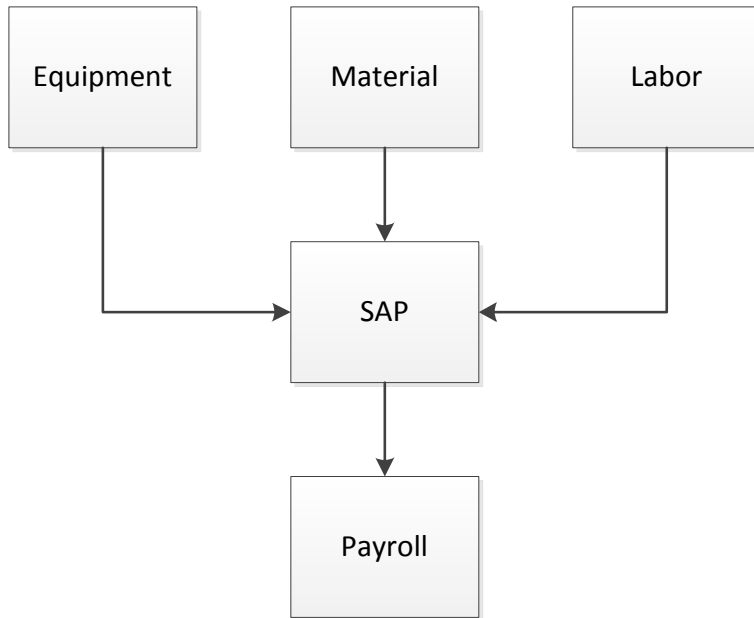
“Function Codes” (VMRS – Reduced to a reasonable categorization)

# Agile Assets

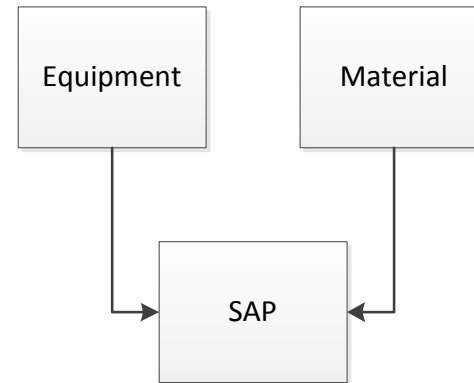
- Data captured
  - Materials
  - Equipment
  - Labor
- Level of Service application can be incorporated to guide budget and activity decision making

# Agile vs. SAP

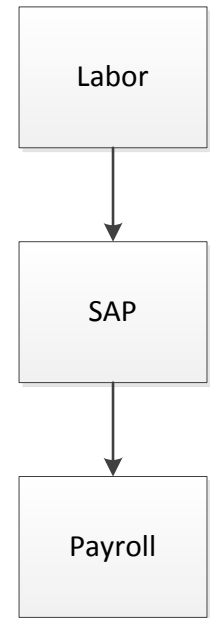
Agile Assets



SAP (PM)



SAP (PTMW)



# Agile Assets

- Agile work orders are loaded into SAP via overnight interface
  - Data sent to SAP include only Labor, Materials & Equipment. Job specific information housed only in Agile
- Approximately 300 maintenance activities in Agile, tracks all maintenance accomplished by in-house crews.

# Agile – Mobile Solution

- Implemented mobile solution using Motorola MC75 PDA
- Download/upload of WO's from system to PDA
- PDA's used to create WO's in field (offline)
- November 2010 – more computer WO's than PDA
- February 2011 – Over 50% WO's created on PDA
- Fiscal Year 2016 – 50% WO's created on PDA

# Original Mobile Work Manager



- Technical Limitations
  - Mapping (GPS, Cellular, etc.)
  - Expensive
- Software Limitations
  - Asset Lists
  - Entire Control Section
  - Few Minor Software bugs
- Employee Limitations
  - Fear of Technology
  - Limited Reading & Writing Skills
  - Multiple Training Sessions Needed



# Agile – Mobile Solution

- PDA Advantages:
  - Portable
  - User friendly
  - Eliminates field paperwork
  - Eliminates some errors
  - Able to upload/download to computer each time device is docked

# Agile – Mobile Solution

- PDA Disadvantages
  - Limited view of activities (memory limitation)
  - Price: new devices or repair
  - Small screen
  - Not as configurable
  - Agile App must upload/download to computer

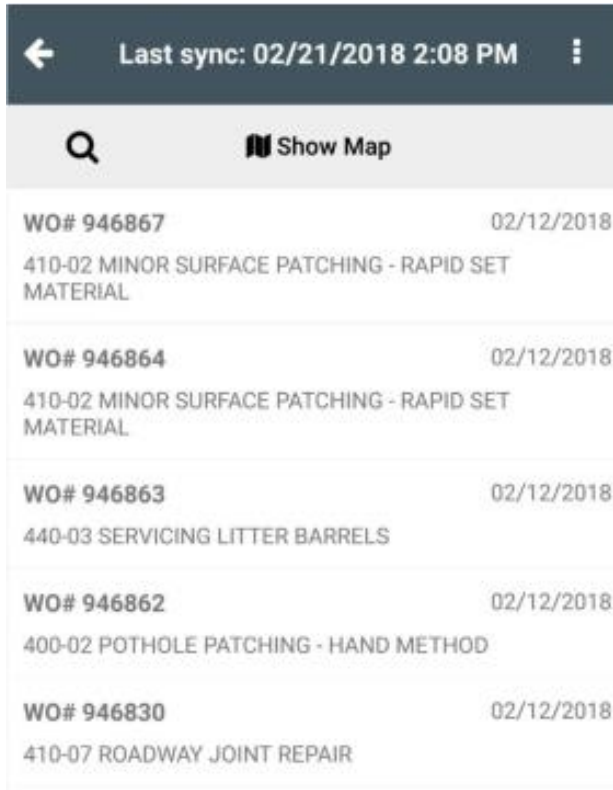
# Partnership with AGILE

- Initial discussions about an updated version on Motorola
- Unimpressed/Too expensive to get new/Additional devices
- Perhaps an APP
- Storyboarding/Initial consult/Site visits
- Initial review of screenshots/Layout
- Working versions/Testing/Improvements

# There will be CHALLENGES

- Resistance/Why can't we just do it the old way?
- Training Volume
- Timeframe/Regression
- User Apathy
- Environmental concerns
- Stereotypes/self-inflicted wounds

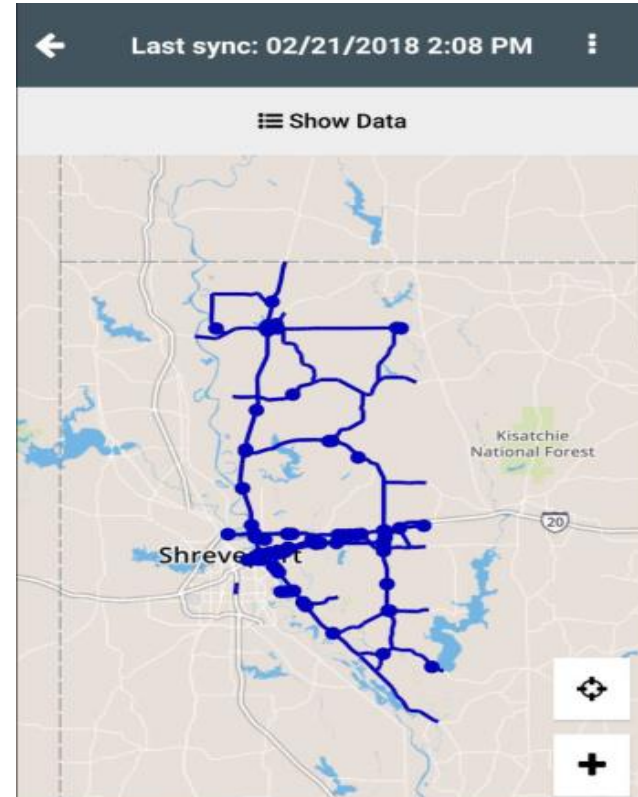
# There's an App for 'dat



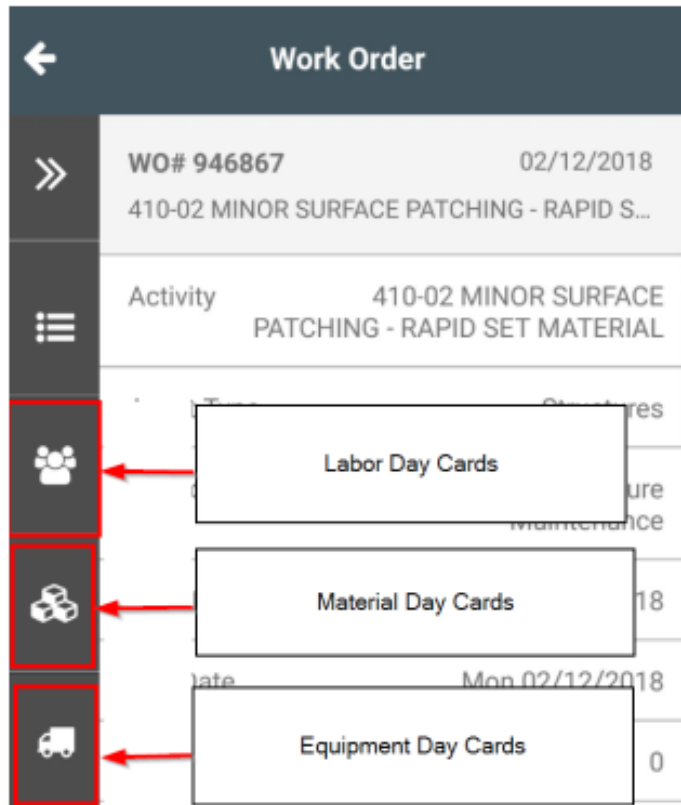
← Last sync: 02/21/2018 2:08 PM

🔍 Show Map

WO# 946867	02/12/2018
410-02 MINOR SURFACE PATCHING - RAPID SET MATERIAL	
WO# 946864	02/12/2018
410-02 MINOR SURFACE PATCHING - RAPID SET MATERIAL	
WO# 946863	02/12/2018
440-03 SERVICING LITTER BARRELS	
WO# 946862	02/12/2018
400-02 POT HOLE PATCHING - HAND METHOD	
WO# 946830	02/12/2018
410-07 ROADWAY JOINT REPAIR	



# Everything in 1 Place & Portable



# MMS Evolution

- AgileAssets upgraded to v.7.3 in June 2018
  - Required hard stop on prior mobile version & devices
  - New devices introduced same week
  - Statewide pilot roll out in June 2018
  - Testing and updates ongoing
  - Estimate full statewide roll out mid 2019



# MMS Evolution

- Assets have added to Agile since initial implementation
  - Roads, Bridges, Signals & Sound walls have been added
  - Interstate Signs recently just added
  - ESRI COLLECTOR
  - Future: cable barriers, impact attenuator, guardrail, culverts, etc...



# Agile – Mobile Solution

- App Advantages:
  - GPS/Mapping (up to date technology & utilization of Roads & Highways platform)
  - Asset Accuracy
  - Access to full catalog of Project, Activity and Asset Codes
  - With or Without WiFi / Cellular Connectivity

# Agile – Mobile Solution

- App Challenges:
  - Temperature / Sun
  - Dirt / Moisture
  - Individuals being responsible for device
  - Wireless Connectivity in Remote Areas
  - Pushing Updates

# Agile - Lessons Learned

- More hands-on field training
- Gather as much field user input as possible
- Continually monitor data to catch errors
- Keep up to date on mobile technology

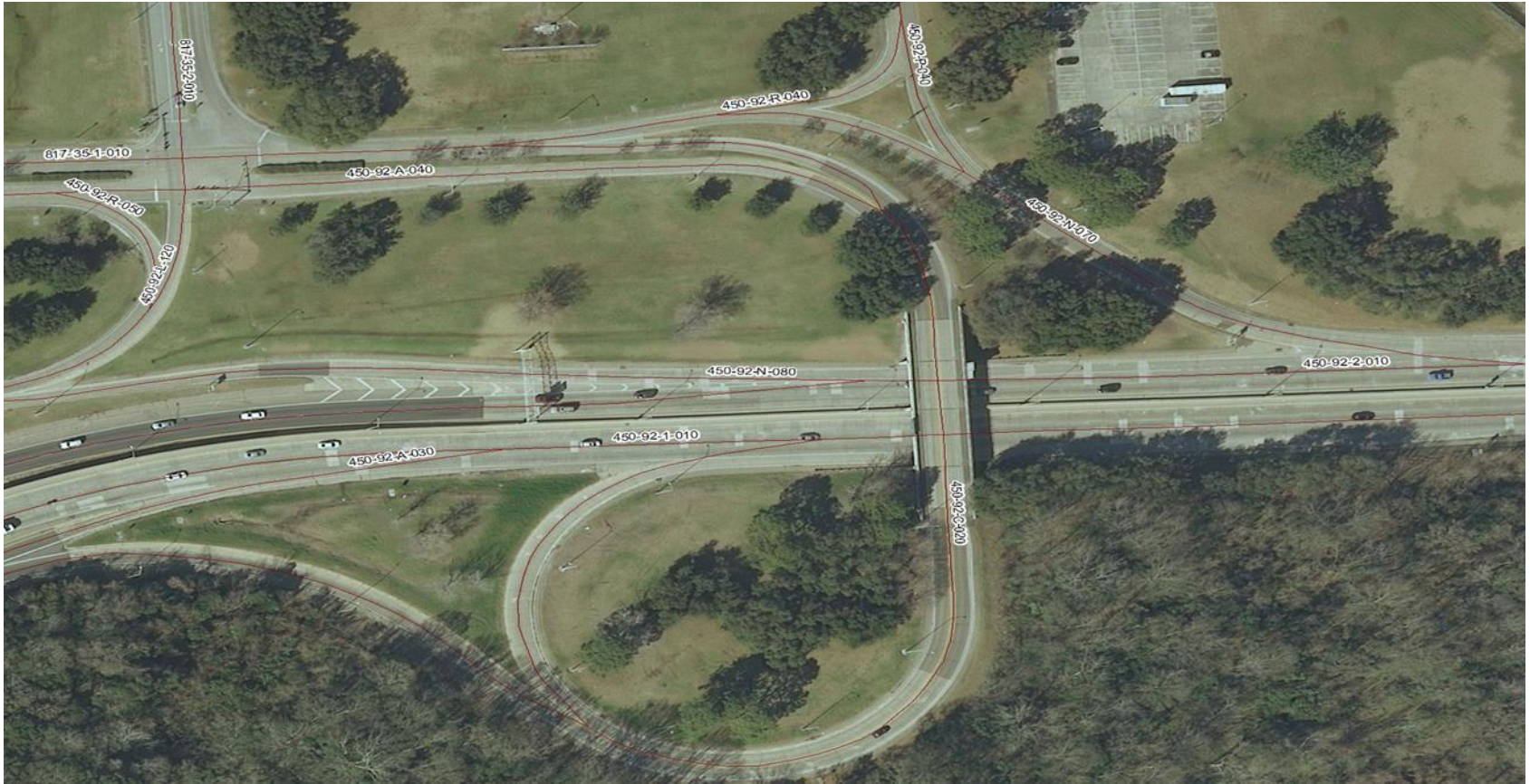
# Value Proposition of LADOTD

- Get BETTER data
- Get data FASTER
- Accuracy of data as relates to specific assets
- Aid in rollout of FULL LRSID system (Louisiana Road Segment Identification Numbers)



LOUISIANA DEPARTMENT OF  
TRANSPORTATION & DEVELOPMENT

# LRSID





# MMS Evolution

- Next steps:
  - Continue to identify assets worthwhile of adding
  - Move from simply tracking to planning with MMS
  - Begin asset collection through same devices via ESRI COLLECTOR
  - Expand MWM with greater functionality
  - Grow/Continue to develop

# Questions?

Thank you!  
Questions?

