

MDOT Transportation Asset Management System (TAMS)

No Boundaries Roadway Maintenance

Practices Pooled Fund Meeting

August 30th, 2017

Columbus, Ohio



Todd Rowley

Transportation Maintenance Coordinator

Justin Droste PE

Asset Management Engineer

MDOT Operations Field Services



MDOT Transportation Asset Management System (TAMS)

What are the initial goals?

2015

- Electronic work order system
- Asset Management Data
- Sign Inventory



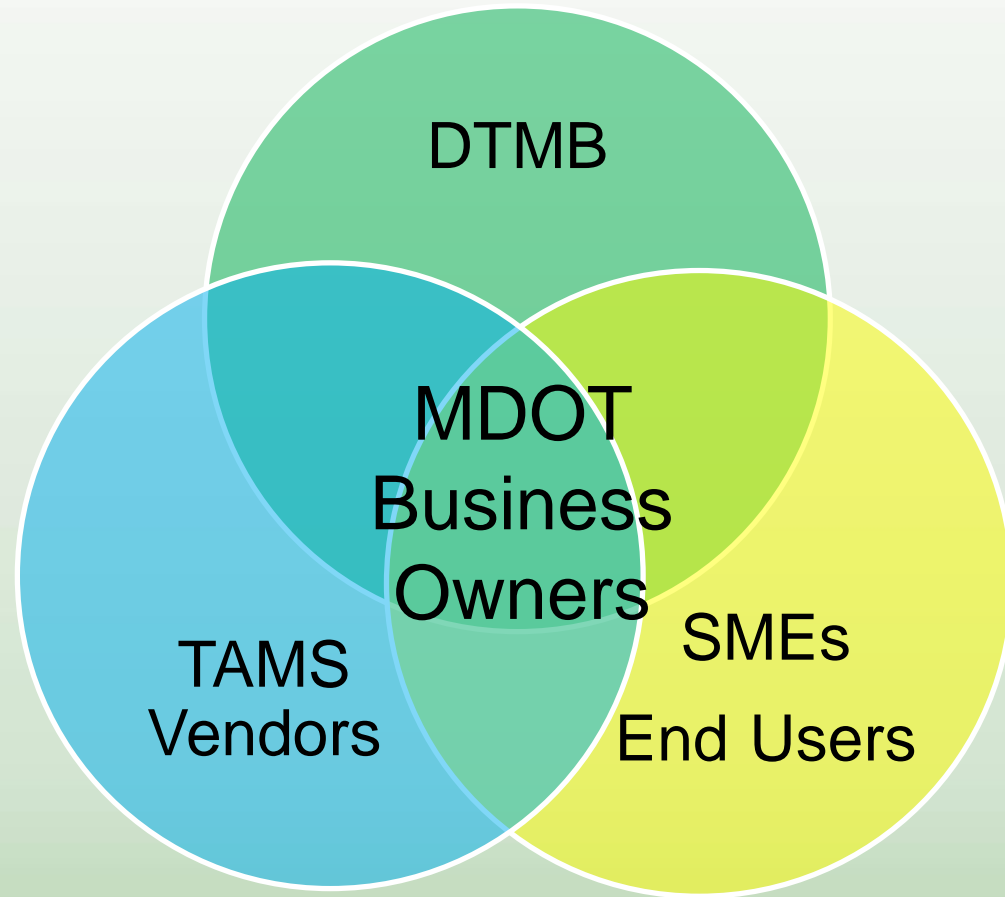
“TAM Systems are the *vendor tools* that will be utilized by combining *spatial information* (across multiple linear referencing systems (LRS) with *business intelligence* to achieve the objectives of Enterprise Asset Management. TAM Systems also *integrate information from other MDOT data systems and applications*”

- Awarded Contract to Data Transfer Solutions, LLC
July 13, 2015



- Contract is for 7 years with options for 5 additional years.
- Key Components:
 - Road Network Management (linear referencing)
 - Asset Inventory Management
 - Maintenance Management
 - Future Integration Capability

- **Project Management:** Department Technology Management and Budget (DTMB) (*Michigan IT agency*)
- **MDOT Business Owners:**
 - [Bureau of Field Services](#)
 - Bureau of Development
 - Bureau of Transportation Planning
- **Subject Matter Experts:**
 - Asset experts
 - Data system experts
- **End Users**
 - Central Office (*statewide*)
 - Regions/TSCs (*Maintenance, Design, Construction*)
 - MDOT Garages
 - Contract Agencies & private contractors



- **Maintenance Management System (MMS)**



- ❖ Asset functions (Road Asset Inventory, Signs, Culverts, Guardrail)
- ❖ Linear referencing functionality
 - ESRI Roads & Highways
 - Straight Line Diagram tool
- Data Interfaces (1-way communication)
 - Global, MIDB, PDRP, M5, Stores, MIBridge, SDE
- **Support Performance Based Maintenance functions.**

❖ *GIS Centered Functions*



Phase 1 Priorities



- Service Request & Work Order Functions
 - Plan/track/report activities
 - Locations
 - Costs
 - Quantities
- Supervisors can schedule work and resources
- Reporting capability
- Integrate w/ existing MDOT systems
- Budget planning and Asset Association



vueworks.

Vendor Tools

- **Vueworks**
- **Mobilevue**
- **Road Analyzer**
- ESRI Roads and Highways tools
- Transcend Productivity tools

Spatial Asset Info

- Culverts (1-10')
- Guardrail
- Cable Barrier
- Signs (5 classes)
- Road Asset inventory (8 classes)
- **Bridges**
- *Pump Stations (in the works)*

Data/System Integrations

- **MiBridge** (bridge system)
- MIDB (employee data)
- PDRP (insurance claims)
- M5 Fleet Focus (fleet)
- FIN MSTAR (materials)
- GIS SDE (asset data)
- Global (address info)
- **MiLogin** (single sign on)

Guardrail Attribute Data

Route	Location	PR Begin	PR BMP	Guardrail Run	Guardrail Type	Post Type	Approach	Departure	Guardrail
M-46	Right	1205603	16.874	0.069	Type B	Steel		Transition	
M-46	Right	3290034	2.016	0.027	Type B				
M-46	Right	1015404	1.963	0.011	Type B	Steel		Anchored Terminal	
M-46	Right	0497604	7.173	0.019	Type B				
M-46	Right	0445005	1.805	0.014	Type B	Steel		Anchored Terminal	
M-46	Right	1015404	5.342	0.028	Type B	Steel			
M-46	Right	0270208	23.912	0.022	Type B	Steel			
M-46	Right	0857803	19.444	0.038	Type B				
M-46	Right	1014806	12.787	0.015	Type B	Steel	Curved	Transition	
M-46	Right	0857803	11.228	0.009	Type T	Steel	Other	Transition	

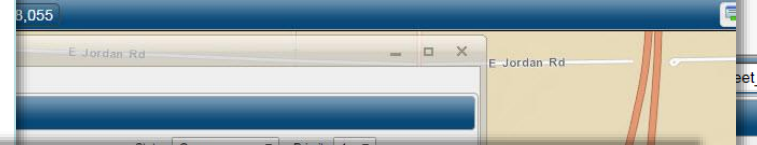
Status: **Closed** Priority:

Begin Date: 09/12/2016 Begin Time: 8:00 AM

End Date: 09/15/2016 End Time: 4:30 PM

Closed By: [Shane Knight](#) 09/20/2016 01:15 PM

Send Email to Notification L...



2/23/2017 4:57:48 PM

http://tamsdev.state.mi.us/VUEWorks/Main/Main.aspx#

VUEWorks Integrated Dashboard

Total Pilot Work Orders (Assigned)

186

Saginaw East Work Orders (Assigned)

Saginaw West Work Orders (Assigned)

Assigned Pilot Work Orders

Mt. Pleasant Work Orders (Assigned)

Niles Work Orders (Assigned)

As	Route_Name	
1	1C392	Travel_Direction
2	1F532	Plus_Minus
3	4A67	Location_Code
4	452A1	Sign_Code
5	76CE	Width
6	4F40	Height
7	196DD	Cluster_Location
8	1B0C6	Sign_Message
9	1CEDD	Substrate
10	10092	Background_Sheeting_Type
11	241	Legend_Sheeting_Type
12	2D32	Sign_Type
13	241	MDOT_Supplied_Sign
14	424D	Sign_Photo
15	241	SignCAD_File
16	15ED2	Sign_Condition
17	241	Sign_Comments
18	1BD58	pr_num
19	241	pr_mp
		sign_inst_id
		POINT_X
		POINT_Y

← Back to Work Order List

← Back to Work Order List

Map

Directions

081116003-Guardrail Repair: Steel Beam
0337310-0.7, 0337310-1

081116003-Guardrail Repair: Steel Beam

0337310-0.7, 0337310-1

Details

Details Assets Photos Documents Tasks Labor Equipment Inventory

+ Head

081116003-Guardrail Repair: Steel Beam
0337310-0.7, 0337310-1

081116003-Guardrail Repair: Steel Beam
0337310-0.7, 0337310-1

MobileVUE

←

+ Add Inventory

Details

Assets

Details Assets

081116003-Guardrail Repair: Steel Beam
0337310-0.7, 0337310-1

Details

+ Add Asset

Aggregate, Surfacing, 23A **2 Tons**

Date: 5/5/2017
Rate: Unit Charge

POST,DELINEATOR,STEEL, 7' 100 PER BUNDLE **2 EA**

Date: 5/5/2017
Rate: Unit Charge

Block, Wood, Offset **23 Each**

Date: 5/5/2017
Rate: Unit Charge

Guardrail-8966:
0337310-0.7, 0337310-1

MATTHE

Date: 8/11/20
Rate: OVT1
Notes
test

CROUCH

Date: 5/5/20
Rate: CBP2
Additional F
- Phase: 33
- :

2

Dat
Rat

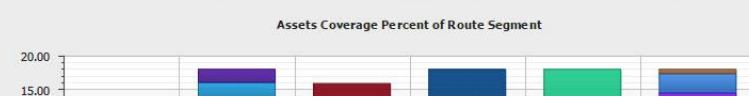
1

Dat
Rat

+

-

Road Analyzer SLD

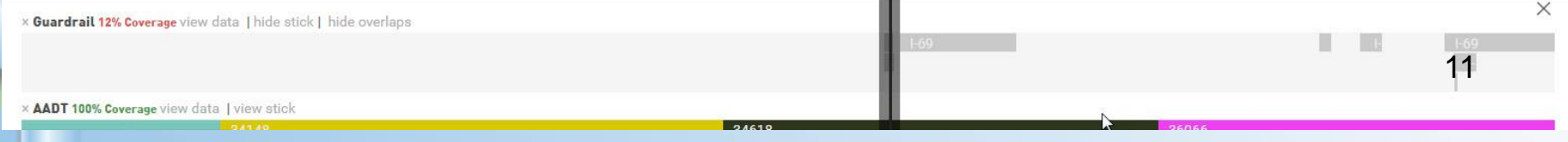


I-69
Lansing, Michigan
View on Google Maps

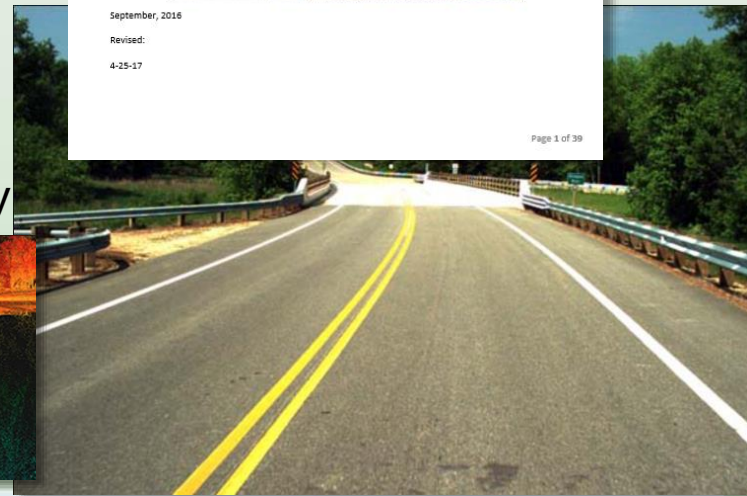
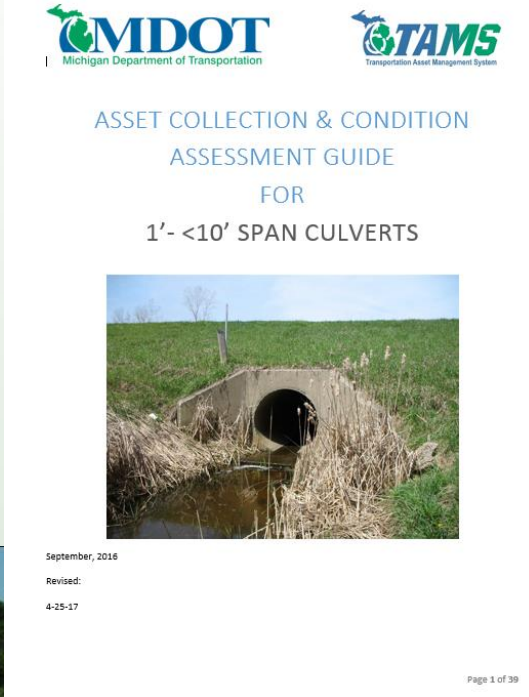
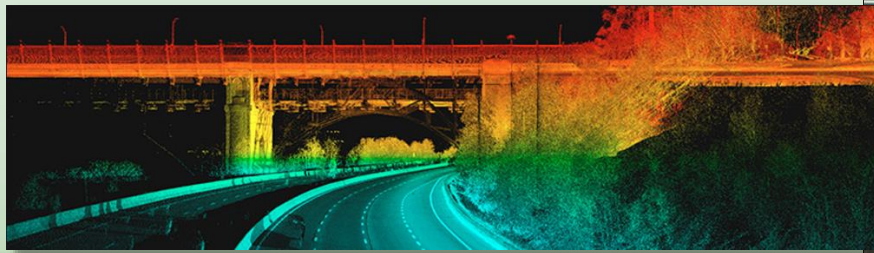
POP OUT



LRM: PR-MP Route ID: 4 Scale: 0.33 From: 1 To: 17.92 Guide: 7.74 « BACK NEXT »



- Other than Roads and Bridges, our GIS asset inventories are sporadic or not current.
- **Each Asset type requires a Data Collection and Condition Assessment guide.**
- Current large scale collection efforts/plans:
 - Extraction of Guardrail and Sign data from photolog imagery
 - Contractor “Boots on the Ground” collection of Culvert (1’-10’) data (5 counties)
 - Looking into mobile LiDAR technology



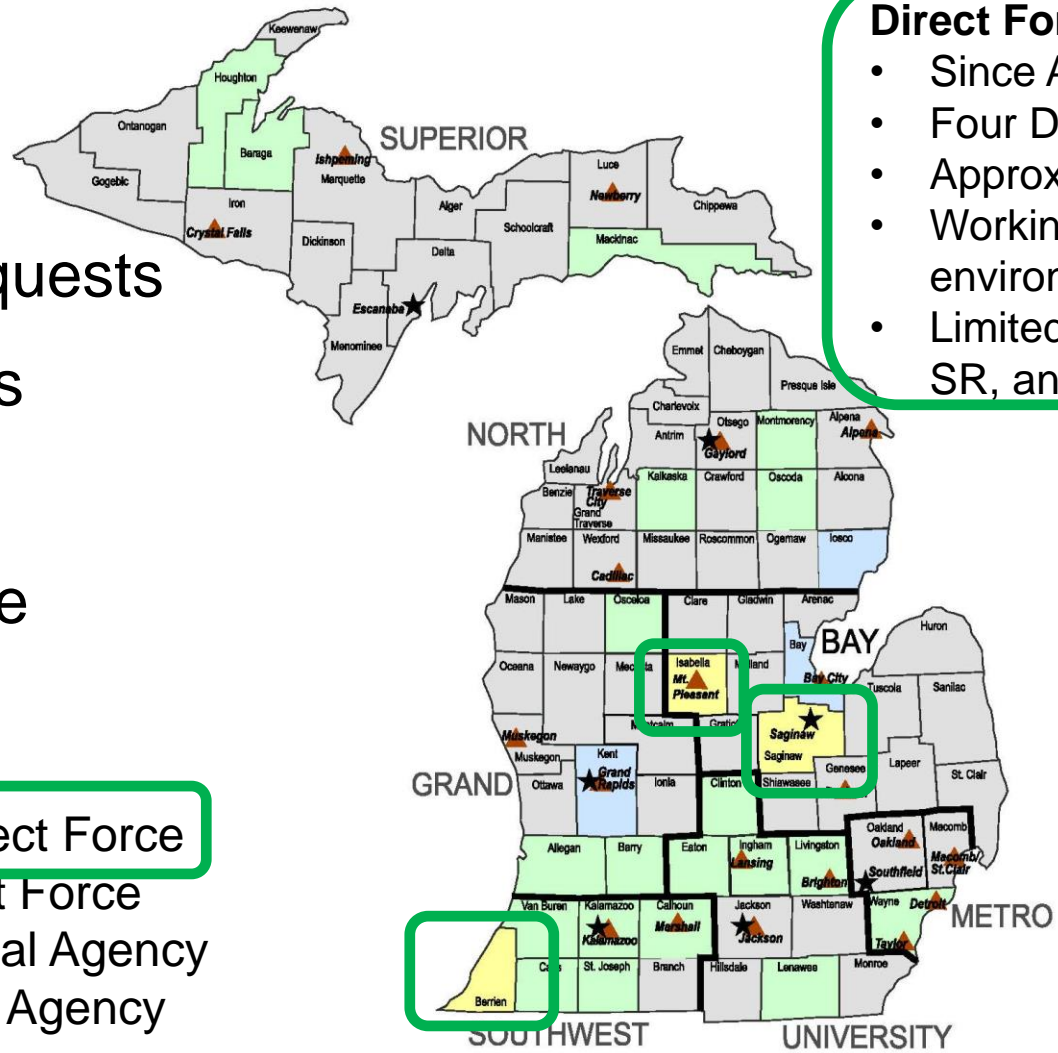
Asset Collection Efforts

Transportation Asset Management System (TAMS) Implementation Plan for Maintenance

- Service Requests
- Work Orders
- MobileVue
- Maintenance Reporting

Direct Force Pilot:

- Since August 2016
- Four Direct Garages
- Approx 350 Work Orders
- Working off DTMB test environment (DEV)
- Limited use of Mobilvue, SR, and reports so far.



- Phase 1: Pilot Direct Force
- Phase 2: All Direct Force
- Phase 3: Pilot Local Agency
- Phase 4: All Local Agency

MMS Schedule

Near Term items for TAMS project:

- “Go live” (production server) roll out November 2017 (*target*)
- Ipads for maintenance users (*outside of project*)
- Final load of existing asset data
- Configuration of signs inventory/project module
- Configuration of pump Station module

Long Term:

- Add additional asset types, data systems, and asset management tools
- Improve asset inventories (photolog extraction, LiDAR, etc)
- Incorporate Construction data into asset inventories
- Implement comprehensive Data Governance, global asset management, and new business practices to MDOT (*cultural Change*)

- Enterprise Asset Management is a “major effort” and requires a lot of groups to implement.
- It is important to have your IT Area involved, but their pace might not match yours.
- **With numerous stakeholders, communication is key, along with managing expectations.**
- **Data Governance is imperative**
- Cultural Changes to how we do business.

THANKS!



Justin Droste PE

drostej@michigan.gov

Asset Management Engineer

MDOT Operations Field Services

6333 Lansing Rd; Lansing, MI 48917