

NO BOUNDARIES • AUGUST 30, 2017

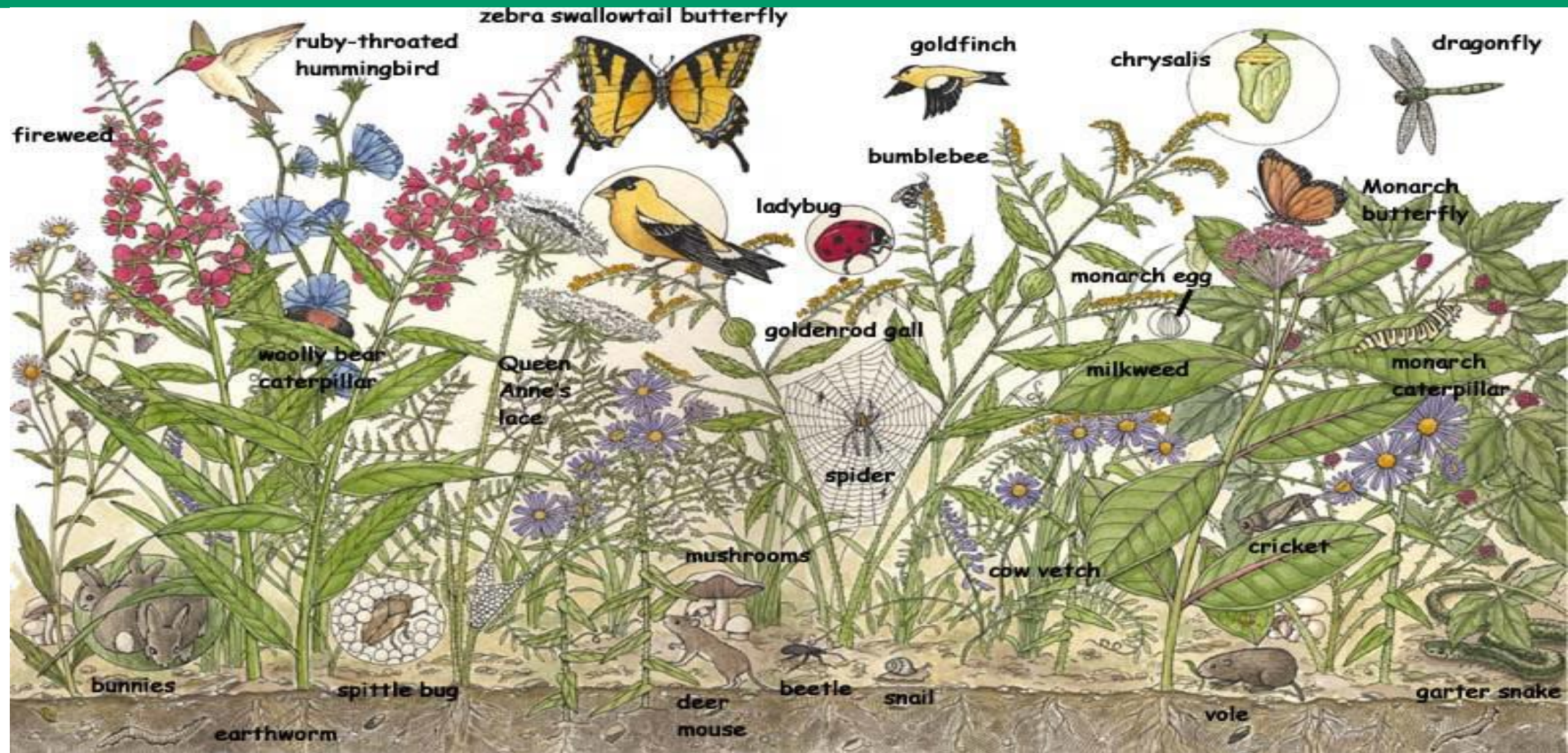


OHIO DEPARTMENT OF
TRANSPORTATION



**Raising Awareness and Creating
Pollinator Habitat**

EVERYTHING HAS A CONNECTION



POLLINATORS ARE VITAL TO AGRICULTURE



Photo Courtesy: PRNewsFoto/Whole Foods Market

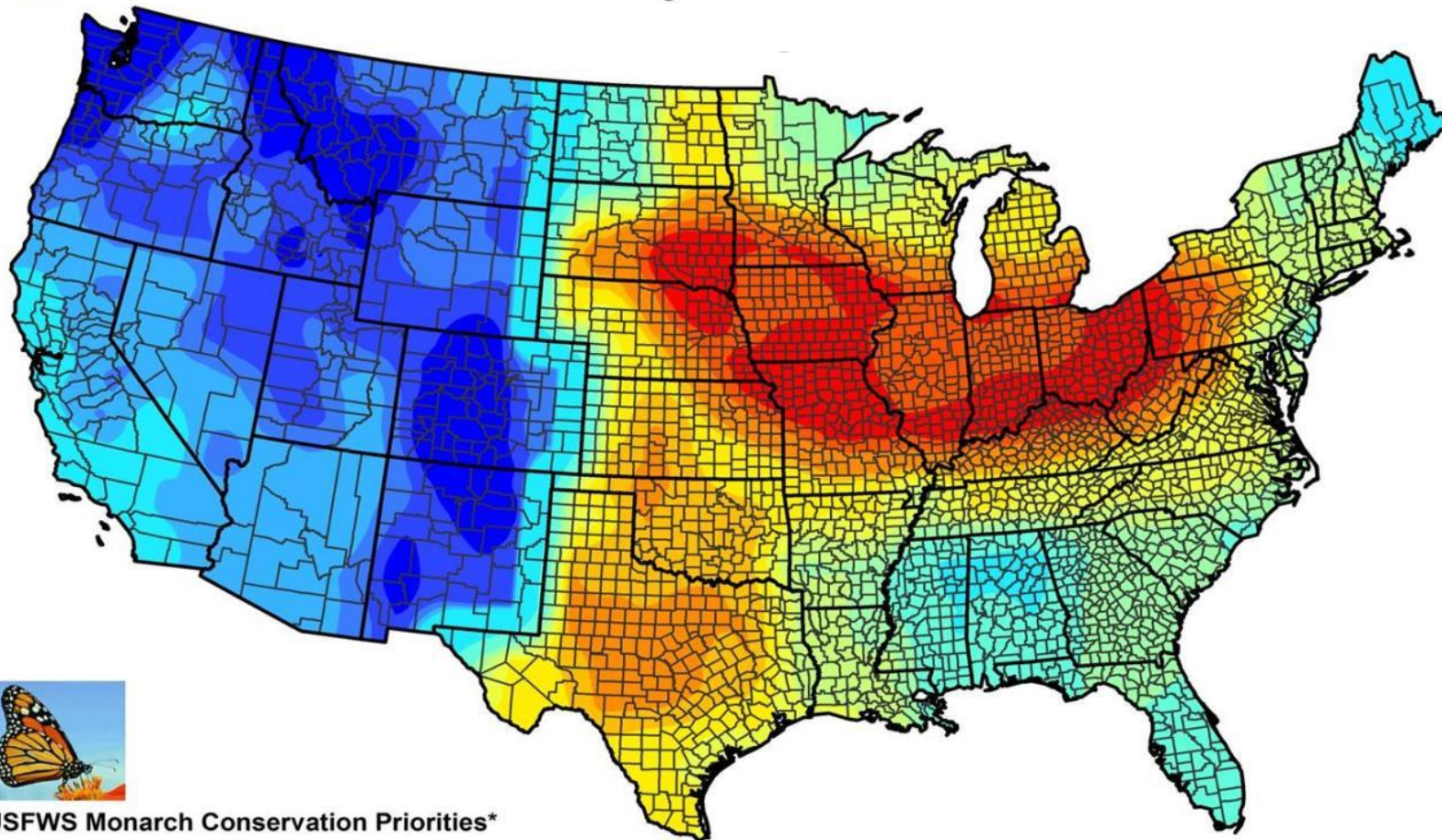
ONE IN THREE BITES OF FOOD HUMANS EAT COME FROM POLLINATORS

OHIO IS A PRIORITY STATE

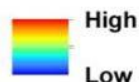


U.S. Fish & Wildlife Service

USFWS Monarch Butterfly National Conservation Priorities



USFWS Monarch Conservation Priorities*



**This map is intended to inform U.S. Fish and Wildlife Service national-scale monarch butterfly conservation work. It was created using tools developed by the USGS-led Monarch Conservation Science Partnership, in this case highlighting priorities for maximizing overwintering population-level outcomes through a combination of focusing on geographic priorities, opportunity areas, and threats to be avoided. This is a DRAFT version and may be adapted or customized for different decisions and/or scales; updates will be ongoing, using the best available science.*

EXPANSION OF STRATEGIC HABITAT CREATION



WORKING WITH INDUSTRY

Ortho and Scotts Miracle-Gro's dedication to pollinators:



CALLING ALL GARDENERS!

Bees, butterflies and other pollinators need more habitat and you can help by planting blooms to attract and feed these unsung heroes.



How to Create a Simple Cottage Garden



How to Make a Simple Pollinator



3 Easy Garden Ideas



How to Make an Easy Flower Bed

Ortho and The Scotts Miracle-Gro Company continue to be committed to their consumers and beneficial pollinators through;

1. Consumer education
2. Consumer alternatives
3. Pollinator partnerships

1. Consumer Education

focused on educating consumers on:

- The importance of pollinators
- The current pollinator situation
- What we can all do to help



PROVIDING CUSTOMERS WITH TARGETED ALTERNATIVES

ORTHO: Provide consumers alternatives that offer effective and responsible control that limits unnecessary risk to beneficial pollinators

Offering Consumers Alternatives

- Ortho pledged to completely exit outdoor garden controls neo-nics by 2021
 - In response to consumer concern about pollinator population decline as related to neo-nics
- 1st major brand to provide consumers these alternatives



ODOT'S ROADSIDE POLLINATOR HABITAT PROGRAM



ODOT's Aesthetic
Wildflower Program

1990s

ODOT's First Roadside
Pollinator Habitat

2013

Ohio Pollinator Habitat
Initiative (OPHI)

2015

Highway Beautification
and Pollinator Habitat
Program

2017

STATUS OF ROADSIDE POLLINATOR HABITATS

Opportunities Abound!

- ODOT maintains 19,000 miles of roadsides
- Nearly 200 acres of pollinator habitat are planted and in establishment
- Hundreds more are in development
- Limited by safety and geography
- Taking a steady and measured approach



PUBLIC-PRIVATE PARTNERSHIPS

Public-Private Partnerships (P3s) allow ODOT to convert more acres

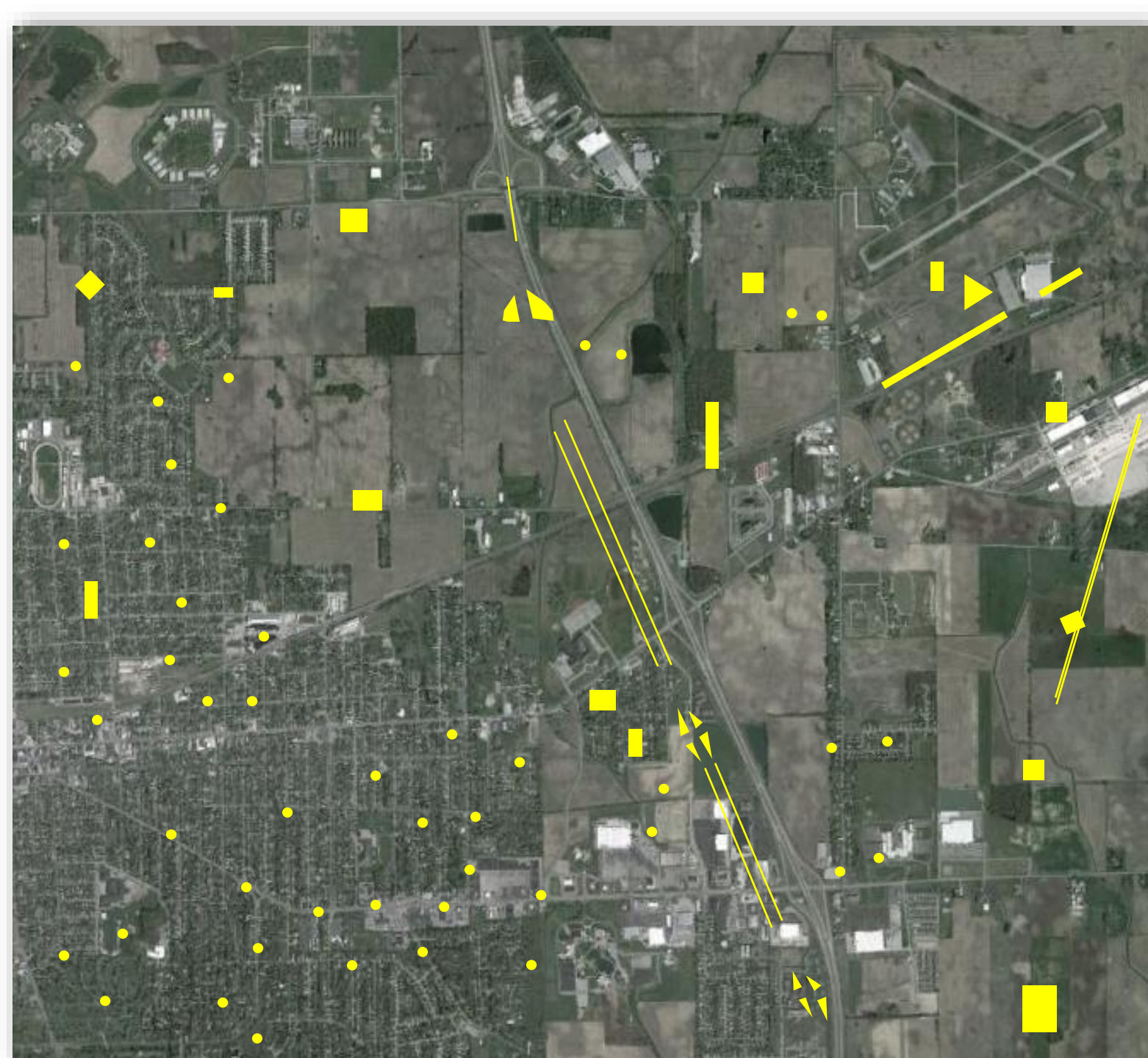
- Cost sharing
- Long-term maintenance
- Gives organizations ownership



SOIL AND WATER CONSERVATION DISTRICTS

- **Jackson SWCD Vegetation Assessment**
 - Locate stands of milkweed along 100 miles of roadway
 - Soil/vegetation/wildlife assessments at 12 proposed pollinator habitat sites
- **Shelterbelts**
 - Reduces snow and ice control
- **Milkweed Pod Collection**
 - Sept.1 - Oct. 31
- **Education Centers**



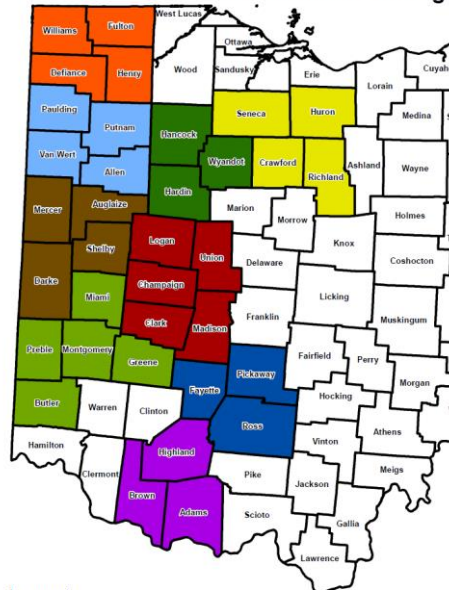


PARTNER AREAS:

- CSP, CRP, WRP
- Roads, Railroads, ROW's
- Schools, churches, businesses
- Parks, golf courses, cemeteries
- Prisons airports, fairgrounds
- Backyards
- More!

ALL HANDS ON DECK

Pheasants Forever's Ohio Farm Bill Wildlife Biologist

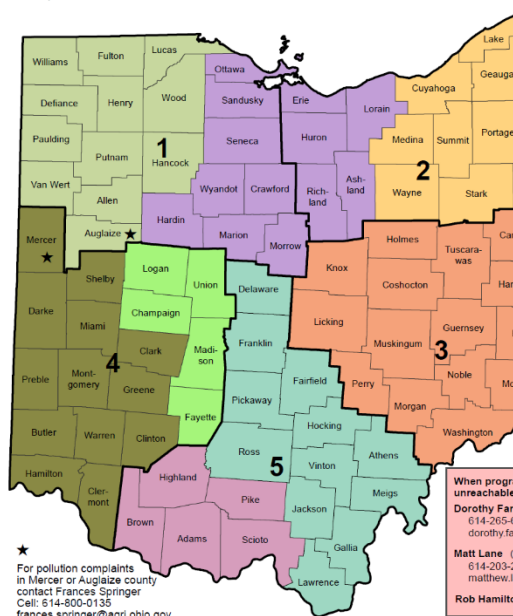


Legend

- Barb Bauer; Cell: 937-515-2221; Email: bbauer@pheasantsforever.org
- Cody Grasser; Cell: 419-551-3875; Email: cgrasser@pheasantsforever.org
- Daniel Francis; Cell: 937-564-3254; Email: dfrancis@pheasantsforever.org
- Christina Slover; Cell: 304-534-2399; Email: cslover@pheasantsforever.org
- Mike Retterer; Cell: (937) 631-1054; Email: mreterer@pheasantsforever.org
- Vacant
- Renee Buck; Cell: 937-578-8264; Email: rbuck@pheasantsforever.org
- Will Newman; Cell: 817-528-9455; Email: wnewman@pheasantsforever.org
- Steve Brown; Cell: 419-327-7349; Email: sbrown@pheasantsforever.org

Ohio Department of Agriculture | Division of Soil and Water Conservation | SWCD Program Specialists | Pollution Complaint Contact

Updated: 08/15/2016



- Jeff Ankney; Cell: 614-551-5694; Email: jeff.ankney@agri.ohio.gov
- Tom Holmes; Cell: 614-562-0145; Email: tom.holmes@agri.ohio.gov
- Greg Nageotte; Cell: 614-339-9076; Email: greg.nageotte@agri.ohio.gov
- Clark Hutson; Cell: 614-361-9867; Email: clark.hutson@agri.ohio.gov
- Chad Amos; Cell: 614-562-0243; Email: chad.amos@agri.ohio.gov
- Liz Cline; Cell: 614-361-8579; Email: elizabeth.cline@agri.ohio.gov
- Ja C; Jar
- R; C; R



Private Lands Biolo Coverage



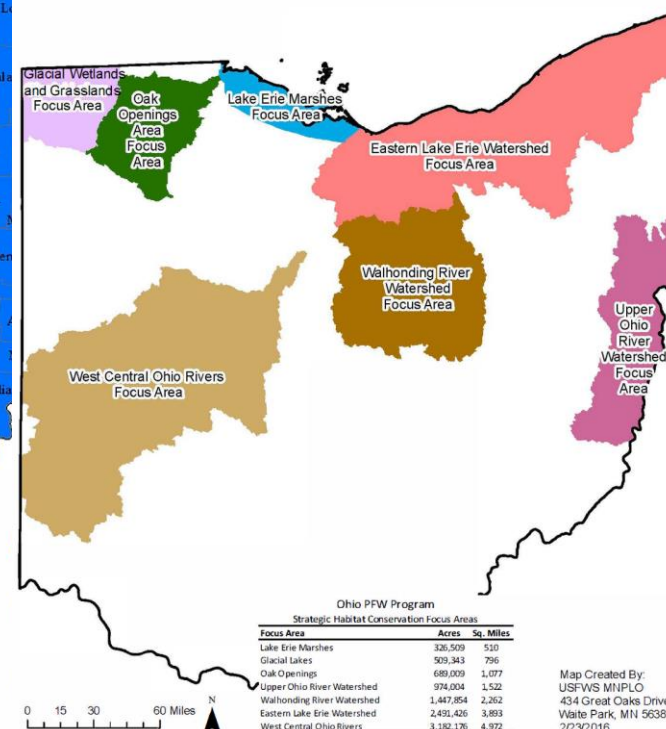
Rev. 11/21/2016

USFWS Offices

- Ecological Services Field Office
- ★ Ohio Private Lands Office
- Ottawa National Wildlife Refuge
- Urbana Private Lands Office



Ohio PFW Program Strategic Habitat Conservation Focus Areas



Ohio PFW Program Strategic Habitat Conservation Focus Areas		
Focus Area	Acres	Sq. Miles
Lake Erie Marshes	326,509	510
Glacial Lakes	509,343	796
Oak Openings	689,009	1,077
Upper Ohio River Watershed	974,004	1,522
Walhonding River Watershed	1,947,854	2,922
Eastern Lake Erie Watershed	2,491,426	3,893
West Central Ohio Rivers	3,182,176	4,972

Map Created By:
USFWS MNPLO
434 Great Oaks Drive
Wabte Park, MN 56387
2/23/2016
edited by OHPLO
10/3/2016

QUESTIONS

